

ADyI

ADVANCED DYNAMO INDUSTRIES, INC.

19425 SW 89TH AVE
TUALATIN, OR 97062
PHONE: (503)692-5995
FAX: (503)885-0417
EMAIL: SALES@ADVANCEDDYNAMO.COM
INFO@ADVANCEDDYNAMO.COM
SERVICE@ADVANCEDDYNAMO.COM

FUEL RETURN LINE INSTALLATION INSTRUCTIONS

Required for all Advanced Dynamo Industries (ADyI) Series 416 gasoline generators installed into the Ford chassis / Winnebago shell vehicles.



A

Directly behind the Fuel Fill Gas Cap (picture A) locate the large diameter Fuel Fill Hose and the smaller diameter Fuel Vent Hose (picture B).

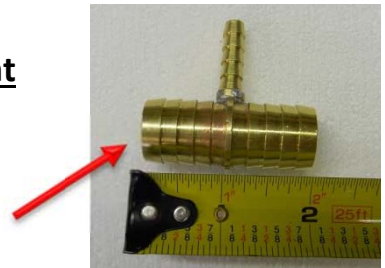


B

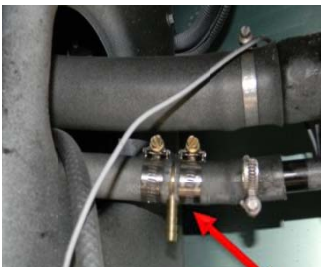


C

In the ADyI supplied Fuel Return Line Kit (picture C), locate the 1" x 1/4" x 1" Brass Vent Tee (picture D).



D

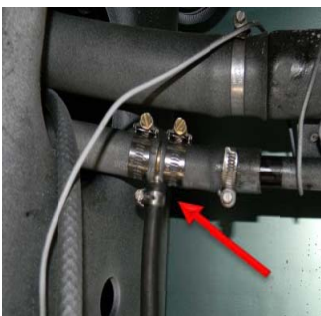


E

Cut the 1" Fuel Vent Hose and install the Brass Vent Tee (picture D) with the 1/4" hose barb pointing toward the generator and secure with the ADyI supplied Hose Clamps (picture E).



F



G

Run the ADyI supplied 1/4" Fuel Return Line from the Generator Fuel Plate-Out barbed fitting (picture F) forward to the previously mounted Brass Vent Tee's 1/4" hose barb along the chassis frame. Follow the same route as the main fuel line to the generator. Cut the 1/4" Fuel Return Line to the length needed and secure to both barbed fittings with the ADyI supplied Hose Clamps (picture G). Finally, secure the Fuel Return Line every 18" – 24" with the ADyI supplied Plastic Zip Ties.

*For additional clarification please reference the attached 416 Fuel System and Fuel Return Kit Schematic.